

## Top Stories This Week

- India's May core sector growth slows to 2.8% vs 8.5% in April.
- India's fiscal deficit during April-May was 2289.86 billion rupees or 42.9 percent of the budgeted target for the fiscal year ending in March 2017
- GAIL & IGL Launch CNG Facility In 2-wheelers
- DLF Promoter KP Singh to infuse Rs 10,000 crore in company. Look to make company debt free
- Bajaj Finserv Ltd is likely to buy out Allianz's stakes in Bajaj Allianz Life Insurance Co. Ltd and Bajaj Allianz General Insurance.
- Shilpa Medicare board approves acquisition of Navya Biologicals Pvt Ltd in exchange for 14 lk shares of Co (~67.8 Cr)
- Adani group eyes financial services. Ties up with Macquarie for NBFC
- NHPC to invest Rs 3,000 crore on solar, wind projects
- ICICI Prudential Life Insurance to launch its Rs 6,000 crore IPO by September: Mint
- Strides Shasun gets shareholder nod for divestment of Shasun Pharma Solutions, UK
- SBI to divest stake in non-core assets to raise Rs 3,000 crore
- NTPC registers 10% growth in power generation in Q1

## Weekly Indices Change

Index	Close	Prev Close	Chg. (%)
SENSEX	27144	26397	2.83
NIFTY	8328	8088	2.97
MIDCAP	11857	11313	4.81
SMLCAP	11885	11278	5.38
METAL	8571	8189	4.66
OIL&GAS	9989	9381	6.48
AUTO	19782	19176	3.16
TECK	6059	6071	-0.20
BANKEKX	20618	19910	3.56
IT	11158	11306	-1.31
FMCG	8608	8143	5.71
HC	15653	14925	4.88
PSU	6824	6472	5.44
CD	12016	11543	4.10
POWER	2007	1909	5.13
CG	15186	14297	6.22
REALTY	1542	1423	8.36

## Global Indices

DOW	17949	17400	3.16
NASDAQ	4862	4707	3.29
FTSE	6577	6138	7.15
NIKKEI	15682	14952	4.88
HANGSENG	20794	20259	2.64

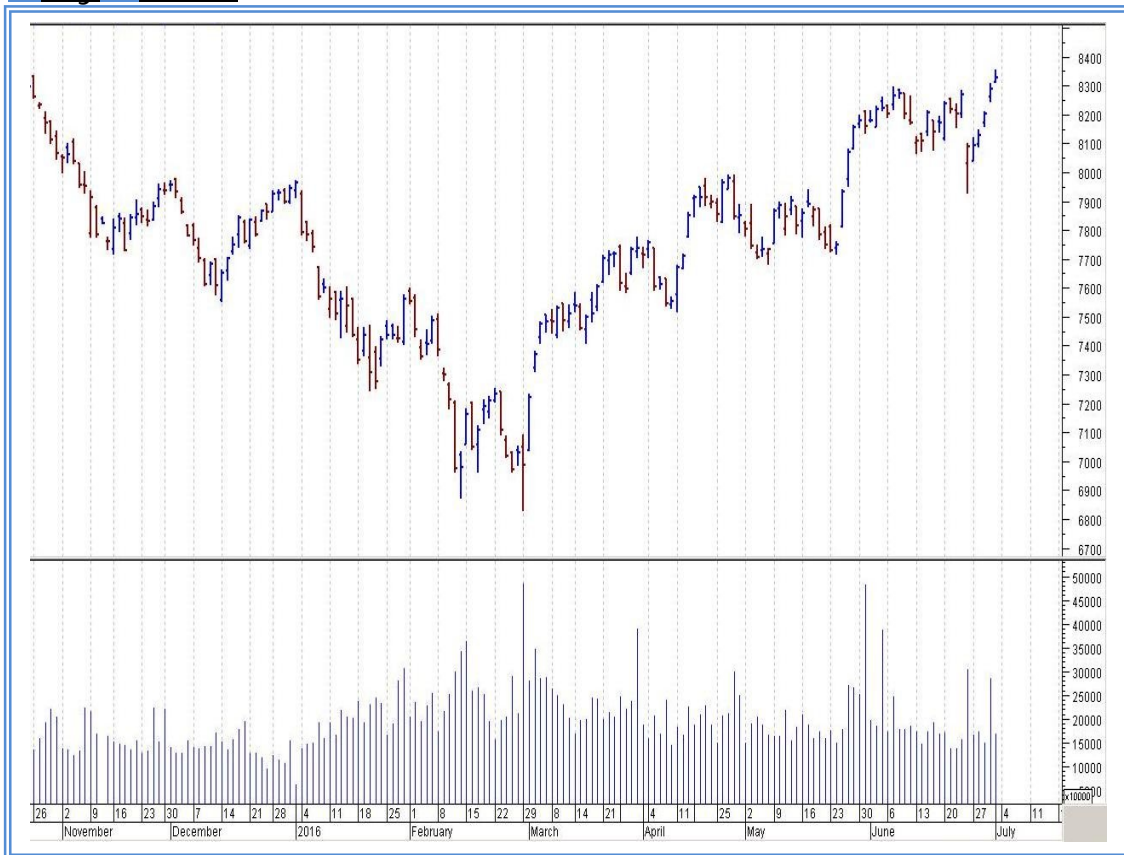
## Top Gainers Weekly

Scrip	Price	% Chg
ARSS Infrastructure	84.15	45.09
Nitco Ltd.	67.85	35.29
Store One Retail Ind	198.15	31.57
Emami Infrastructure	78.50	29.64
Max Ventures and Ind	65.85	26.51

## Top Losers Weekly

Scrip	Price	% Chg
Mandhana Industries	100.55	22.53
KPIT Technologies	157.15	11.59
Astec Lifesciences Ltd	365.25	6.24
Maxwell Industries Ltd	67.05	4.49
Lux Industries	617.55	3.18

## Nifty Corner



Support & Resistance						
S3	S2	S1	Nifty	R1	R2	R3
8150	8200	8250	8328	8400	8450	8550
Moving Averages						
20DMA	50DMA	100DMA	200DMA			
8195	8025	7745	7785			

## Market Commentary

Market edged higher last week after the Union Cabinet approved a long-awaited pay hike for its employees. The sentiment was also boosted by a global relief rally as the immediate impact of Brexit began to fade. With the Futures & Options (F&O) expiry on Thursday, 30 June 2016, the market witnessed higher volatility. Gains in global markets also aided the upmove on the domestic bourses. World stocks rose as worries subsided about the fallout from the UK's decision to leave the European Union known as Brexit. The UK voted to leave the European Union (EU) in a referendum on 23 June 2016. The unexpected referendum result sent shock waves through the UK parliament, leaving the two biggest political parties in turmoil. Back home, the barometer index, the S&P BSE Sensex, rose 747.20 points or 2.83% to settle at 27,144.91. The Nifty 50 index rose 239.75 points or 2.96% to settle at 8,328.35. For the next week Nifty likely to trade in the range between 8400 – 8450 in the upper side and 8250 – 8200 in the lower side.

### Stocks at 52 wk High

Scrip	Cmp
Bharat Financial	734.85
BPCL	1091.95
City Union Bank	120.45
DLF	151.45
Escorts	223.15

### Stocks at 52 wk Low

Scrip	Cmp
Hanung Toys	6.00
Mandhana Ind	100.55
Parabolic Drugs	3.95
Setco Auto	50.55
SRS	8.70

### FII Activity

Date	Figures in crore
27/06	-146.11
28/06	-190.43
29/06	102.91
30/06	1107.42
01/06	-187.51
NET	686.28

### DII Activity

Date	Figures in crore
27/06	-147.07
28/06	-242.71
29/06	-20.19
30/06	-190.76
01/06	907.05
NET	306.32

### Weekly Stock Idea

Scrip	B/S	Cmp	Tgt
TALWALKAR	B	230	265
ABAN	B	213	235
TFCIL	B	41	45
BBTC	B	423	445
MCLEODRUSS	B	212	225

Buy on dips & Sell on rise with Stop-loss of 3%

### Volume Breakout Stocks

Scrip	Cmp
Jayshree Tea	108.05
Panacea Biotech	137.75
KPIT Tech	157.15
SJVN	28.85
HCL Info	43.05

### Week Ahead

MAJOR RESULTS/AGM MEETING THIS WEEK:

04 JULY: MCDHOLDING

05 JULY: GMBREW

06 JULY: GOACARBON, JBFIND

07 JULY: PALREDTEC, ZEELEARN

08 JULY: 8KMILES, SOUTHBANK

**VISIT US AT: [WWW.INDIRATRADE.COM](http://WWW.INDIRATRADE.COM)**

#### **Disclaimer**

This report is for private circulation within the Indira Group. This report is strictly confidential and for information of the selected recipient only and may not be altered in any way, transmitted to, copied or distributed, in part or in whole, to any other person or to the media or reproduced in any form. This report should not be construed as an offer or solicitation to buy or sell any securities or any interest in securities. It does not constitute a personal recommendation or take into account the particular investment objectives, financial situations, or any such factor. The information, opinions estimates and forecasts contained here have been obtained from, or are based upon, sources we believe to be reliable, but no representation of warranty, express or implied, is made by us to their accuracy or completeness. Opinions expressed are our current opinions as of the date appearing on this material only and are subject to change without notice.